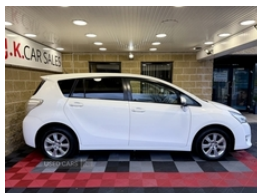


Toyota Verso 1.6 D-4D Icon 5dr | Jan 2016

FINANCE FROM £ 196 PER MONTH WITH £ 0 DEPOSIT / £ 35 ROAD TAX

£8,995



2016 Toyota Verso Icon 1.6 D-4D - 7 SEATER

1.6 D-4D Diesel 110BHP 6 speed manual
69K miles with service history
MOT 08/12/2025
3 months warranty
£35 Road TAX
2 keys
Just fully serviced
Trade ins welcome

Dual zone air conditioning, Bluetooth connectivity, CD/AUX/Bluetooth/USB audio, DAB radio, touch screen, electric windows and mirrors, parking sensors, reversing camera, multifunction steering wheel, power fold wing mirrors, cruise control, ISOFIX, 16" alloy wheels

Finance this car from £196 per month with £0 deposit

Walkaround video available

£8995

ROI customers
VRT calculated at only €
NOx levy €

PM, text or call 07724336181

84 Cunninghams Lane
Dungannon
BT71 6BX

#toyota #toyotaverso #jkcarsales #usedcarsni

Vehicle Features

| | |
|-------------------------|---------|
| Miles: | 69000 |
| Fuel Type: | Diesel |
| Transmission: | Manual |
| Colour: | White |
| Engine Size: | 1598 |
| Body Style: | MPV |
| Insurance group: | 14E |
| Reg: | SO65TJU |

Technical Specs

| DIMENSIONS | |
|-------------------------------------|--------|
| Length: | 4460mm |
| Width: | 1790mm |
| Height: | 1630mm |
| Seats: | 7 |
| Luggage Capacity (Seats Up): | 330L |
| Gross Weight: | 2260KG |
| Max. Loading Weight: | 740KG |

| PERFORMANCE & ECONOMY | |
|------------------------------------|---------|
| Fuel Consum. (Urban Cold): | 51.4MPG |
| Fuel Consum. (Extra Urban): | 72.4MPG |
| Fuel Consum. (Combined): | 62MPG |
| Fuel Tank Capacity: | 55L |
| Number Of Gears: | 6 SPEED |
| Top Speed: | 115MPH |
| Acceleration 0-100 km/h: | 12.7s |
| Engine Power BHP: | 110BHP |

2 individual folding 3rd row seats, 2 speed intermittent front wiper with mist function, 3 individual folding 2nd row seats, 3 rear height adjustable headrests, 3 spoke leather covered steering wheel, 6 speakers, 12V power point front/rear, 16" alloy wheels + locking wheelnuts, ABS+Electronic Brake force Distribution, Accessory socket front and rear, Active front headrests, Adjustable steering column, Air recirculation control, Ashtray and cigar lighter, Audio integrated fit with LCD, Automatic instrument display dimmer, Auxiliary input socket, Bluetooth phone integration system, Body colour bumpers, Body colour door handles, Bottle holders, Brake assist function, Central Storage Box, Chrome air vent surrounds, Chrome front fog light surround, Chrome front grille, Chrome rear garnish, Clean air filter, Cloth upholstery, Coat hooks, Cooled glovebox, Cruise control, Cupholders in front and rear, DAB Digital radio, Digital clock, Door ajar warning, Driver's footrest, Driver/front passenger side airbags, Driver/passenger airbags with hybrid inflators, Driver/passenger front seatback pockets, Driver/passenger sunvisors with illuminated vanity mirrors + covers, Drivers knee airbag, Dual zone automatic air conditioning, Electric power steering, Electronic headlamp levelling, Five 3 point rear safety belts, Follow me home headlights, Front/centre/rear interior lights, Front/rear assist grips, Front/rear electric windows with one-touch/anti-trap and key-off function, Front and rear curtain airbags, Front and rear door pockets, Front armrest, Front fog lights, Front seatbelt pretensioners with force limiters, Fully carpeted luggage compartment, Green tinted glass, Heated/electric door mirrors with integrated indicators, Heated glass rear screen, Height/reach adjust steering wheel, Height adjustable driver's seat, Height adjustable front headrests, Height adjustable front seatbelts, Hidden under floor storage in boot, Hill assist control, Illuminated glovebox with lock, Isofix child seat attachment, Key in reminder, Leather wrapped gear shift knob, Lights on warning, Luggage load hooks, Outside temperature display, Overhead console, Passenger airbag deactivate switch, Privacy glass, Radio/single CD with MP3 and WMA compatability, RDS with PTY + EON setting, Rear armrest, Rear child proof door locks, Rear headrests, Rear removable tonneau cover, Rear spoiler, Rear wiper, Reclining/sliding front seat, Reclining 2nd row seats, Reclining 3rd row seats, Remote alarm with perimeter, Remote boot release, Remote central double locking, Remote courtesy light with delay, Remote fuel cap release, Retractable door mirrors, Retractable tonneau cover, Roof mounted radio aerial, Sliding 2nd Row rear seats, Steering column lock, Steering wheel mounted audio controls, Storage under front passenger seat, Titanium effect fascia, Titanium effect interior door handles, Titanium effect steering wheel and centre consol, Touch 2 touchscreen + MP3 player/ipod connectivity + reversing camera, Transponder engine immobiliser, Trip computer with fuel consumption/average speed, Tyre pressure warning, Tyre repair kit, Under floor storage in 2nd row, Upper glovebox, USB port, Vehicle stability control + traction control + brake assist

