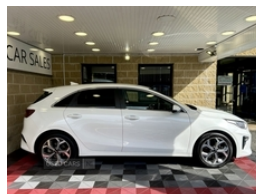


## Kia Ceed 1.0T GDi ISG 3 5dr | May 2021

### FINANCE FROM £ 279 PER MONTH WITH £ 0 DEPOSIT

# £12,795



2021 Kia Ceed 1.0T GDi ISG 3

1.0T GDi Petrol 118BHP 6 speed manual  
40K miles with full service history  
Car will be sold with 12 months MOT  
3 months warranty  
£195 Road TAX  
2 keys  
Just fully serviced  
Trade ins welcome

Dual zone air conditioning, touch screen, Bluetooth connectivity, CD/AUX/Bluetooth/USB audio, DAB radio, SAT NAV, electric windows and mirrors, line assist, reversing camera, parking sensors, power fold wing mirrors, cruise control, auto lights and wipers, multifunction steering wheel, ISOFIX, 17" alloy wheels

Finance this car from £279 per month with £0 deposit

Walkaround video available

£12795

ROI customers  
VRT calculated at only €2872  
NOx levy €70

PM, text or call 07724336181

J.K. CAR SALES  
84 Cunninghams Lane  
Dungannon  
BT71 6BX

#Kia #kiaceed #jkcarsales #usedcarsni

## Vehicle Features

<b>Miles:</b>	40000
<b>Fuel Type:</b>	Petrol
<b>Transmission:</b>	Manual
<b>Colour:</b>	White
<b>Engine Size:</b>	998
<b>CO2 Emission:</b>	126
<b>Tax Band:</b>	Petrol/Diesel (£195 p/a)
<b>Body Style:</b>	Hatchback
<b>Insurance group:</b>	9E
<b>Reg:</b>	LA21RWF

## Technical Specs

### DIMENSIONS

<b>Length:</b>	4310mm
<b>Width:</b>	1800mm
<b>Height:</b>	1447mm
<b>Seats:</b>	5
<b>Luggage Capacity (Seats Up):</b>	395L
<b>Gross Weight:</b>	1800KG
<b>Max. Loading Weight:</b>	438KG

### PERFORMANCE & ECONOMY

<b>Fuel Consum. (Urban Cold):</b>	43.5MPG
<b>Fuel Consum. (Extra Urban):</b>	57.6MPG
<b>Fuel Consum. (Combined):</b>	51.4MPG
<b>Fuel Tank Capacity:</b>	50L
<b>Number Of Gears:</b>	6 SPEED
<b>Top Speed:</b>	118MPH
<b>Engine Power BHP:</b>	118BHP

3 x passenger assist grips, 4.2" supervision colour cluster display, 6 speaker audio system, 10.25" touchscreen satellite navigation including telematics, 12V socket in luggage compartment, 17" alloy wheels, 60/40 split folding rear seat, ABS with Electronic Brakeforce Distribution (EBD) & Brake Assist System (BAS), Alarm system, All-round Electric Windows with Front Auto Up & Down Function, All-round height adjustable headrests, All round 3-point seatbelts, Apple car play/Android Auto with voice control, Auto dimming rear view mirror, Automatic defog system, Automatic headlights, Black High Gloss Front Console Tray garnish & door trim, Bluetooth with Voice Recognition & Music Streaming, Body colour bumpers, Body colour door mirrors, Body coloured rear spoiler, Body colour exterior door handles, Centre console storage box/armrest, Chrome window surround, Cloth/faux leather bolsters upholstery, Cruise control + speed limiter, Cupholders in centre console, Cupholders in rear armrest, DAB Radio with MP3, Dash illumination dimmer switch, Driver & Front Passenger Sunvisors with Vanity Mirror Illumination & Ticket Holder, Driver's seat height adjuster, Driver + front passenger electric lumbar support, Driver attention warning, Dual front side airbags, Dual Height Luggage Area Floor, Dual horn, Dual zone automatic air conditioning, Electric adjustable/heated/folding door mirrors with LED Indicators, Electronic stability control and vehicle stability management, Emergency stop signalling system, Engine Immobiliser & Deadlocks, Faux leather door trim, Forward Collision-Avoidance Assist (FCA) - City/Pedestrian, Front and rear door storage, Front fog lights, Front map light with sunglasses case, Front passenger airbag deactivation, Front Passenger Seat Height Adjuster, Front seatback pockets, Gear shift indicator, Halogen projection headlights, Headlining in Light grey, Heated rear window with timer, Height adjustable front seatbelts, High beam assist, High gloss black radiator grille, Hill start assist control (HAC), Illuminated ignition key hole, Illuminated USB ports, Impact sensing auto door unlocking, Intelligent Stop and Go, Interior door lock/unlock function, ISOFIX Child seat top tethers and anchor fixings, Kia connected services featuring TomTom live, Lane Following Assist (LFA), Lane keep assist, Leather handbrake, Leather steering wheel and gearshift, LED daytime running lights, LED High-mounted Brake Light, LED rear lights, Locking wheel nuts, Luggage area light, Luggage area parcel shelf, Luggage hooks, Motor driven power steering, Outside temperature gauge, Privacy glass (rear side windows and rear screen), Rain sensing front wipers, Rear centre armrest, Rear coat hooks, Rear door child safety locks, Rear parking sensor, Rear wash/wipe, Remote central door locking with fold away key, Reversing camera with dynamic guide lines, Satin Chrome Fascia Trim, Satin chrome interior door handles, Seatbelt reminder warning, Service interval indicator, Speed limit information function (SLIF), Speed sensitive auto door locking, Steering wheel mounted controls, Tilt/telescopic adjust steering wheel, Tinted glass, Traction control, Trip computer, Twin Curtain Airbags, Twin front airbags, Tyre mobility kit, Tyre pressure monitoring system, USB Fast Charger in Front Centre

Console, USB port for connection of a media device, Wide view  
drivers door mirror, Windscreen Washer Level Warning