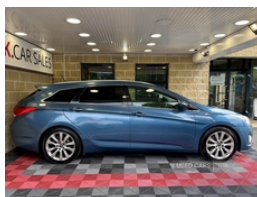


## Hyundai i40 1.7 CRDi [136] Premium 5dr | Mar 2012

**£4,495**

**FINANCE FROM £ 98 PER MONTH WITH £ 0 DEPOSIT**



2012 Hyundai i40 Estate 1.7 CRDi Premium

1.7 CRDi Diesel 134BHP 6 speed manual  
107K miles with service history  
Car will be sold with 12 months MOT  
3 months warranty  
£195 Road TAX  
Just fully serviced  
Trade ins welcome

Dual zone air conditioning, electrically adjustable leather seats, heated seats, touch screen, Bluetooth connectivity, CD/AUX/Bluetooth/USB audio, SAT NAV, electric windows and mirrors, reversing camera, front and rear parking sensors, line departure warning, panoramic roof, power fold wing mirrors, cruise control, auto lights and wipers, multifunction steering wheel, ISOFIX, 18" alloy wheels

Finance this car from £98 per month with £0 deposit

Walkaround video available

£4495

ROI customers  
VRT calculated at only €  
NOx levy €

PM, text or call 07724336181

J.K. CAR SALES  
84 Cunninghams Lane  
Dungannon  
BT71 6BX

#hyundai #hyundaii40 #jkcarsales #usedcarsni

|                         |              |
|-------------------------|--------------|
| <b>Miles:</b>           | 107000       |
| <b>Fuel Type:</b>       | Diesel       |
| <b>Transmission:</b>    | Manual       |
| <b>Colour:</b>          | Blue         |
| <b>Engine Size:</b>     | 1685         |
| <b>CO2 Emission:</b>    | 134          |
| <b>Tax Band:</b>        | E (£195 p/a) |
| <b>Body Style:</b>      | Estate       |
| <b>Insurance group:</b> | 17E          |
| <b>Reg:</b>             | EK12GG0      |

### Technical Specs

|                                     |                 |
|-------------------------------------|-----------------|
| <b>DIMENSIONS</b>                   |                 |
| <b>Length:</b>                      | 4770mm          |
| <b>Width:</b>                       | 1815mm          |
| <b>Height:</b>                      | Not Availablemm |
| <b>Seats:</b>                       | 5               |
| <b>Luggage Capacity (Seats Up):</b> | 553L            |
| <b>Gross Weight:</b>                | 2120KG          |
| <b>Max. Loading Weight:</b>         | 472KG           |

|                                    |          |
|------------------------------------|----------|
| <b>PERFORMANCE &amp; ECONOMY</b>   |          |
| <b>Fuel Consum. (Urban Cold):</b>  | 47.9MPG  |
| <b>Fuel Consum. (Extra Urban):</b> | 61.4MPG  |
| <b>Fuel Consum. (Combined):</b>    | 55.4MPG  |
| <b>Fuel Tank Capacity:</b>         | 70L      |
| <b>Number Of Gears:</b>            | 6 SPEED  |
| <b>Top Speed:</b>                  | 124MPH   |
| <b>Acceleration 0-100 km/h:</b>    | 10.6s    |
| <b>Engine Power BHP:</b>           | 134.1BHP |

## Vehicle Features

2 stage reclining rear seats, 3x3 point rear seatbelts, 12V power outlets, 18" alloy wheels, 60/40 split folding rear seat, ABS, Active front headrests, Adjustable front and rear head restraints, Alloy fascia with gloss black inserts, Auto dimming rear view mirror, Automatic door locking, Automatic front rain sensing wipers, Automatic headlights, Bluetooth connectivity with voice control, Body colour bumpers, Body colour door mirrors, Brake assist function, Childproof rear door locks, Chrome door handles, Chrome interior door handles, Chrome window surround, Cooled glovebox, Cruise control + speed limiter, Deadlocks, Driver's seat memory, Driver and passenger airbags, Drivers knee airbag, Dual zone climate control, Electrically adjustable front seats including lumbar support, Electric folding mirrors, Electric front and rear windows + anti trap + one touch, Electric heated door mirrors, Electric tilt/slide panoramic sunroof, Electronic parking brake, Electronic Stability Programme, Follow me home headlights, Front and rear cupholders, Front and rear door pockets, Front and rear parking sensors, Front centre armrest with storage compartment, Front door courtesy lamps, Front fog lights, Front intermittent wipers, Front map reading lights, Front seatback pockets, Front seatbelt pretensioners + load limiters, Front side airbags, Front windscreen de-icer, Full size curtain airbags, Heated front seats, Heated rear windscreen, Height/reach adjustable steering column, Height adjustable front seatbelts, Hill start assist control (HAC), Illuminated luggage compartment, Isofix rear child seat preparation, Keyless entry, Leather steering wheel and gear knob, Leather upholstery, LED daytime running lights, Locking illuminated glove compartment, Locking wheel nuts, Luggage area underfloor compartment, Luggage hooks, Luggage net, Park assist system, PAS, Passenger airbag deactivate switch, Privacy glass (rear side windows and rear screen), Radio/CD + MP3, Rear bumper chrome under-bar, Rear centre armrest, Rear centre console with air vents, Rear spoiler, Rear view camera, Rear wiper, Remote central locking, Retractable load cover, Seatbelt warning, Silver roof rails, Solar reflect windscreen, Stainless steel door sills, Steering wheel audio controls, Sunvisors with illuminated vanity mirrors, Temporary spare wheel, Thatcham category 1 alarm + immobiliser, Touchscreen colour Satellite Navigation, Traction control, Trip computer, USB/iPod/auxiliary input connections